

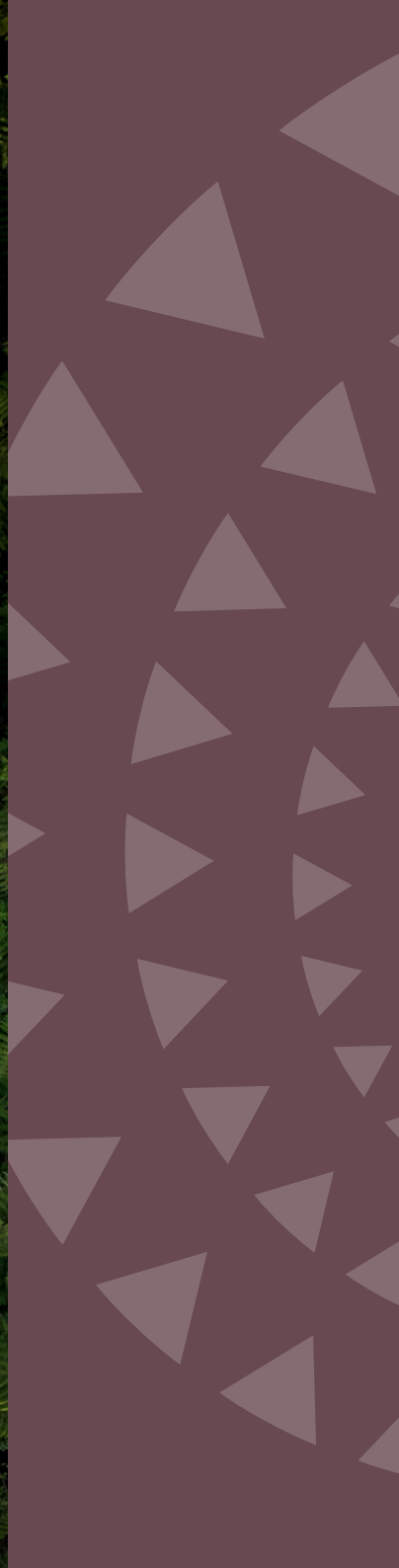
He Kete Mātauranga

Mātauranga Māori
& Climate Innovation Hui

5 June 2024



Climate
Connect
Aotearoa



Contents

5	Ā Mātou Mātāpono Our Principles
6	Ko Wai Mātou Introduction
8-9	Wātaka Timetable
10-11	Pae Mātauranga Mātauranga Māori Panel
12	Huritao Reflection
13-14	Pae Auaha Climate Innovation Panel
15	Huritao Reflection
16-17	Pae Anamata Anamata (Rangatahi) Panel
18	Huritao Reflection
22	Whakamiha Acknowledgements

Climate Connect Aotearoa

GridAKL, 101 Pakenham Street West,
Wynyard Quarter, Auckland Central
climateconnectnz.com

He Kete Mātauranga

climateconnectnz.com/learn/he-kete-matauranga

Karakia Timatanga

Whakaoho te mauri
Kia wana, kia māia
Tuwhera te whatumanawa
Kia mārama
Kia tapatahi
Ka tupu, ka whanake
Ki te toi matua
Tūturu whakamaua kia tina! Tina!
Haumi e, hui e, tāiki e!

Ā Mātou Mātāpono

Our Principles

Me ū ki Te Tiriti:

Hold steadfast to the provisions and principles of Te Tiriti o Waitangi

Me aro ki te whakapapa:

Focus on interconnectedness and the guidance from those before us.

Me tīmata kia tika:

Focus on the process and what is tika for the kaupapa.

Me tiaki te mauri:

Protect the life force that permeates all living things. Ka ora te mauri, ka ora te tangata.



Ko Wai Mātou

Introduction

Climate Connect Aotearoa (CCA) is a climate innovation hub based in Tāmaki Makaurau. Our aim is to connect diverse groups and communities in Auckland and support them in creating future-focused solutions in the face of environmental issues and challenges in the region. We are guided by Te Tāruke-ā-Tāwhiri: Auckland's Climate Plan and its goals in building an equitable, climate resilient and low carbon Tāmaki Makaurau.

In 2023, we established He Kete Mātauranga – an online space designed to support businesses and communities in building climate resilience through Māori knowledge systems and frameworks. Since then, we have connected with Māori leaders and innovators through online interviews and explored what mātauranga Māori means to them and the role it plays in their climate action. Today we come together to bring these discussions to life.

Indigenous perspectives in modern climate spaces are vital and we see immense value in creating a safe space for Māori to wānanga, collaborate, network, learn and just be. Our hui seeks to inspire, educate and connect businesses, innovators, community groups, iwi, hapū and rangatahi in Tāmaki Makaurau who are looking to better their climate practices from a mātauranga Māori starting point. Most importantly, we want to foster connection and bring people together in their efforts to strengthen the wellbeing and mauri of the taiao. We believe that mātauranga Māori provides a window to ancestral knowledge that is uniquely tailored to support and enhance the mana and mauri of our environment and ecosystems, and innovation allows us to do this in (k)new and exciting ways.



MCs



Waimarama Hawke

Ngāti Whātua Ōrākei, Ngāti Pikiao, Ngāti Awa, Ngāti Ranginui, Ngāti Mahuta, Ngāti Maniapoto

Climate Innovation Advisor Māori – Climate Connect Aotearoa

In her role within Climate Connect Aotearoa, Waimarama is responsible for amplifying Māori voices in climate innovation spaces and ensuring that te ao Māori values and perspectives are central in its efforts to fostering a climate resilient Tāmaki Makaurau. Her desire is to create spaces for Māori voices, stories, and narratives that are unique to Tāmaki Makaurau and Aotearoa. She is committed to empowering iwi kāinga and mana whenua as leaders in climate justice and supporting their right to shaping their relationship with the taiao.



Cornell Tukiri

Ngaati Hikairo, Ngaati Whaawhaakia, Kāi Tahu

Climate Innovation Lead Māori – Climate Connect Aotearoa

Cornell sees the interweaving of kōrero tuku iho or stories handed down from generations before with our lives today aids in determining our decision making. The layered understanding of whakapapa offers more than just genealogical ties, it offers connection, insight and holistic views of our world. Cornell's role is to develop further understanding of climate change with a te ao Māori lens and support indigenous leadership in this space.

Wātaka

Timetable

WĀ	KAUPAPA	KO WAI
09.30	Registration	
09:50	Whakataū	Te Mahurehure Cultural Marae
10.00	Kapu Tī	
10.10	MC Welcome	Waimarama Hawke
MĀTAURANGA MĀORI		
10.20	Keynote	<i>Keynote Speaker</i> Rereata Makiha
10.35	<i>Panel Discussion</i> Mātauranga Māori	<i>Moderator</i> Dan Hikuroa <i>Panellists</i> Rereata Makiha Hana Tapiata Ayla Hoeta
11.20	Q&A	
11.35	Tuku Taonga	Climate Connect Aotearoa
11.40	Group Reflection	Waimarama Hawke
11.55	Wā Tina - Lunchtime + Networking	
CLIMATE INNOVATION		
12.35	Keynote	<i>Keynote Speaker</i> Pauline Harris
12.50	<i>Panel Discussion</i> Climate Innovation	<i>Moderator</i> Dan Te Whenua Walker <i>Panellists</i> Pauline Harris Emily Afoa Troy Brockbank

1.35	Q&A	
1.50	Tuku Taonga	Climate Connect Aotearoa
1.55	Group Reflection	Waimarama Hawke
2.10	Paramanawa - Afternoon Tea and Group Photo	
TE ANAMATA		
2.30	Keynote	<i>Keynote Speaker</i> Hinerapa Rupuha
2.45	<i>Panel Discussion</i> Te Anamata	<i>Moderator</i> Te Huia Taylor <i>Panellists</i> Sonny Vercoe Haukapuanui Vercoe Hinerapa Rupuha
3.30	Q&A	
3.45	Tuku Taonga	Climate Connect Aotearoa
WHAKAMUTUNGA		
3.50	MC Closing & Karakia	Waimarama Hawke Te Mahurehure Cultural Marae
4.00	Finish	

Pae Mātauranga

Mātauranga Māori Panel

This panel brings together esteemed mātauranga Māori experts and practitioners, who are noted as global leaders in their respected fields. Drawing from their own unique understanding of mātauranga Māori they will explore the importance of Māori knowledge, stories and kōrero tuku iho in their relationship with the taiao.

Ngā Kaikōrero

Speakers



Rereata Makiha

Ngāti Pakau, Ngai Tuteauru, Ngāti Hau

Māori Astrologer and Maramataka Expert

Rereata Makiha is recognised as one of New Zealand's leading experts in Māori astrology and the Māori Lunar Calendar. He committed 40 years of his life to the revitalisation of te reo Māori through Māori journalism and broadcasting and was celebrated in 2021 as Senior New Zealander of the Year. Raised in the Hokianga, with the teachings of his ancestor, Nukutawhiti, Rereata is regarded to as an exponent in mātauranga Māori. Rereata is a member of the Society of Māori Astronomy Research and Traditions and has strong connections to Te Mahurehure Cultural Marae.



Dr Dan Hikuroa

Ngāti Maniapoto, Ngāti Mahuta, Ngaati Whanaunga, Pākehā

Associate Professor, Te Wānanga o Waipapa – School of Māori Studies and Pacific Studies, Waipapa Taumata Rau – University of Auckland

Dan Hikuroa is a father, surfer and gardener. He is the Associate Professor in Māori Studies at the University of Auckland and holds a PhD in Geology – with a strong background in Earth Systems and multidisciplinary Environmental Studies. As the UNESCO New Zealand Commissioner for Culture, Hikuroa is a world expert on weaving indigenous knowledge and science to support Māori communities to become resilient to the impacts of anthropogenic climate change. His expertise is sought by all, from marae who seek to protect their urupā against sea level rise, to policy makers in New Zealand.



Hana Tapiata

Tūhourangi, Ngāti Tarāwhai

Māmā, Writer, Advisor

Hana Tapiata is a Māmā and published author – with her second book Atua Wāhine: The Ancient Wisdom of Māori Goddesses being released in September 2024. She is the podcast host of The Whakapapa Effect, where she interprets tupuna mātauranga and applies it to her everyday living in a modern context. Raised and immersed in Te Reo Māori me ōna tikanga, Hana is drawn to storytelling, wānanga and kaupapa that promote the teachings of atua and tūpuna Māori. Her mission is to share Māori ancestral knowledge as the blueprint for a self-determined, whakapapa-guided life.



Ayla Hoeta

Waikato Tainui, Ngaati Tahinga

Maramataka Practitioner, Lecturer – Faculty of Creative Arts and Industries, Design Programme, University of Auckland

Ayla is a proud maama to twin boys and a Maramataka practitioner. She honours the maatauranga of her tupuna by revitalising traditional practices in daily urban life. As a Lecturer and Assistant Associate Dean Maaori at the University of Auckland's Design School, she integrates Maramataka into ako and design practice, aiming to support taura and whaanau in indigenising practices through kaupapa Maaori. Ayla has a bachelor's degree in Maori Development and an Honours degree in Communications. She also features as a guest writer for The Spinoff.

Huritao – Reflection

Use this space to write down anything that inspires you, burning questions you may have for our panellists or great ideas you have for the future. Perhaps start by answering the pātai – *what is mātauranga Māori to you and how does it inform your relationship with the environment?*

Pae Auaha

Climate Innovation Panel

This panel brings together respected Māori leaders in Science, Innovation and Technology who all weave Te Ao Māori values and frameworks into their climate and sustainability work across Aotearoa. Together, they will explore the interface of Māori Knowledge and Climate Innovation and (k)new approaches to climate resilience.

Ngā Kaikōrero

Speakers



Dr Pauline Harris

Rongomaiwahine, Ngāti Kahungunu ki Wairoa, Ngāti Rakaipaaka

Deputy Director Māori – MacDiarmid Institute for Advanced Materials and Nanotechnology

Dr Pauline Harris is an astrophysicist who has specialised in high energy neutrino production and inflationary cosmology. Her research focuses on mātauranga Māori associated with Māori astronomy; Māori calendars and climate change. Currently, Dr Harris is the Chairperson of the Society for Māori Astronomy Research and Traditions (SMART), the Deputy Director Māori for the MacDiarmid Institute for Advanced Materials and Nanotechnology and the Vision Mātauranga Theme Leader for the Science for Technological Innovation National Science Challenge. She was also part of the Matariki Advisory Committee that established the Matariki public holiday.



Dan Te Whenua Walker

Tangahoe, Ngāti Ruanui, Ngāruahine, Ngāti Kahungunu ki Wairoa, Maniapoto, Tūhourangi, Te Atiawa

Partner Development Manager – Microsoft

Dan is an experienced leader in Business Development and Relationship Management with an extensive background in the IT and Tech sectors. He has a particular passion for how technology can be utilised for Māori and Pasifika economic development. Dan is the Deputy Chair of New Zealand Māori Tourism, Pou Tuarā of Te Rūnanga o Ngāti Ruanui, Director at Tātaki Auckland Unlimited, Ringa Hora Board Member, and holds a variety of community trustee roles around Auckland. He was the recipient of the Young Māori Business Leader of the Year award in 2022.



Emily Afoa

Ngāpuhi, Ngāti Maniapoto

Pou Whakarae – Director at Tektus Consultants

Emily is an environmental engineer with experience in tertiary institutions, local government, and consultancy firms. In 2018, she joined Tektus – an Auckland-based consultancy providing collaborative engineering, environmental, and planning solutions. She has a passion for water sensitive solutions that value Te Ao Māori and benefit both community and environment and ensures that mātauranga and tikanga Māori are central in her work. Her expertise in stormwater management is underpinned by her Doctorate which focussed on the function of living roofs in Aotearoa.



Troy Brockbank

Te Rarawa, Ngāti Hine, Ngāpuhi, Ngāti Wai, Ngāti Kahu

Te Mana o Te Wai Lead – Beca

Troy holds a Bachelor of Engineering (Civil) from the University of Auckland, and believes strongly in integrating mātauranga Māori, alongside conventional engineering practices to achieve sustainable outcomes unique to Aotearoa New Zealand. Passionate about addressing environmental challenges at their core, he advocates for holistic, culturally enhanced approaches. Troy is a board member of Taumata Arowai, Water New Zealand, and Ngāti Hine Health Trust. He also contributes as a mātauranga Māori practitioner to various environmental and water technical committees, alongside iwi and hapū throughout Aotearoa.

Huritao – Reflection

Use this space to write down anything that inspires you, burning questions you may have for our panellists or great ideas you have for the future. Perhaps start by answering the pātai – *can mātauranga Māori and technology work together in addressing climate challenges?*

Pae Anamata

Anamata (Rangatahi Panel)

This panel brings together young and emerging taiao champions who are leading the way for their generation. All nurtured in Te Ao Māori, this remarkable collective of Māori PhD candidates, business owners and upcoming leaders are committed to protecting their environment for the generations to come.

Ngā Kaikōrero

Speakers



Hinerapa Rupuha

Ngāti Kahungunu, Te Whānau a Apanui, Rangitāne

Tauira – Te Kura o ngā Kurī a Tarawhata

Kua waimarie ahau i tōku whakatipuranga. He mea whakatipu ahau e ngā pou o te marae o Hoani Waititi, te kaiwhakapūmau i te reo, i ngā tikanga, i ngā hua o te ao Māori ki roto i ngā uri ahi tere. Ko ngā mahi katoa i tōku ao e hāngai ana ki te reo rānei, ki te ao waka hourua rānei. Ko te whāinga nui, kia whakarauora mai i ngā kōrero mō te ao waka hourua mā roto mai i te whakatere waka.



Te Huia Taylor

Ngaati Te Ata Waiohua, Te Waiariki

Director of Paakaurua Consultants Limited

Te Huia is a product of the Kura Kaupapa Māori Movement and was raised by her iwi of Ngaati Te Ata Waiohua. Her passion for te reo Māori is reflected in being a licensed translator and holding a Masters in Te Reo Kairangi (Language Excellence). She also holds a Bachelor of Commerce. Te Huia is the Director of Paakaurua Consultants Limited, who led the Māori Engagement Plan for Auckland's Climate Plan. Their work ranges from maatauranga Māori advising and project management to taiao and reo kaupapa.

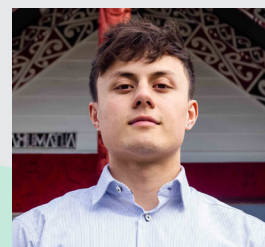


Haukapuanui Vercoe

Te Arawa, Tūwharetoa, Te Atihaunui-a-Pāpārangī, Ngāti Kahungunu, Ngāti Pāhauwera, Ngāti Raukawa, Ngāi Tahu

PhD Student – University of Auckland

Haukapuanui Vercoe, an emerging Māori researcher in civil engineering, is dedicated to bolstering marae infrastructure resilience against natural hazards and climate change. Currently a PhD candidate at Waipapa Taumata Rau – The University of Auckland, his research focuses on interweaving Māori and Western engineering knowledge systems. A product of his time in kōhanga reo, kura kaupapa and marae, Haukapuanui draws from his Te Ao Māori and engineering backgrounds to contribute to the future of marae disaster-risk reduction and community resilience.



Sonny Vercoe

Te Arawa, Tūwharetoa, Te Atihaunui-a-Pāpārangī, Ngāti Kahungunu, Ngāti Pāhauwera, Ngāti Raukawa, Ngāi Tahu

PhD Student – University of Auckland

Sonny Vercoe, a rising Māori researcher in civil engineering, is committed to providing whareniui-specific provisions to the engineering assessment guidelines. Currently a PhD candidate at Waipapa Taumata Rau – The University of Auckland, his research centres on the detailed seismic assessment of whareniui. Shaped by his experiences in kōhanga reo, kura kaupapa, and marae, Sonny draws from his cultural heritage and engineering expertise to contribute to the future of marae resilience in seismic events.

Huritao – Reflection

Use this space to write down anything that inspires you, burning questions you may have for our panellists or great ideas you have for the future. Perhaps start by answering the pātai – ***How can we ensure that the voices of rangatahi are central to decision-making processes related to climate and sustainability?***

Notes



Whakamiha

Acknowledgements

Te Mahurehure Cultural Marae
Tātaki Auckland Unlimited
Lyndon Katene
Kaitiaki Rodger
Andy Farrant
Jacqueline Blanchard
Andrea Love

Karakia Whakakapi

Kia tau te mauri
Kia ora te ngākau
Whakawātea te ara
Te ara ki mua
Te ara ki tua
Kia puta ki te whai ao
Ki te ao mārāma
Haumi e, hui e, tāiki e!

