



Climate
Connect
Aotearoa

Impact 2024



Welcome

It's been two years since we launched Climate Connect Aotearoa, and we're excited to share our highlights and stories. From those initial 'who are we?' stages, to getting some significant collaborative programmes underway, we're helping pave the way for a low carbon, resilient Tāmaki Makaurau Auckland and beyond.

Climate Connect Aotearoa was established to foster the collaboration needed to deliver Te Tāruke ā Tāwhiri: Auckland's Climate Plan. While led by Auckland Council, this regional plan requires all of us to play a role to halve net emissions by 2030 and build climate resilience.

Our mahi has been anchored by the approaches and priorities we worked with our Advisory Group to establish. Working with this amazing group of experts, we established three main goals: to **connect** people and organisations across the climate innovation ecosystem, **collaborate** in developing projects driven by collective wellbeing and support all to **learn** and build capacity.

Our initial work focused on building collaborative foundations and sharing knowledge widely, including mapping climate innovation and knowledge ecosystems through our ClimateLink tool.

A key priority has been He Kete Mātauranga, bringing indigenous knowledge and practices to the fore both online and kanohi ki te kanohi. The response has been incredible, and we're excited about its continued development and influence on our work.

We've also spent a lot of time engaging with a wide range of stakeholders to identify key challenge areas requiring collaboration, particularly around energy sharing, green jobs and skills and preparing small and medium-sized businesses (SMEs) for climate change impacts. These are long-term, system-level programmes, and in some cases are still early in the process. We look forward to updating you more as they grow and scale.

Our small team, supported by Tātaki Auckland Unlimited, has been able to deliver a range of tools, programmes and events in a relatively short amount of time. This report shares some of the highlights and measures we established with the Ākina Foundation. We cannot capture everything, including all of the great connections we have made, but the report gives you some insights into our mahi, what we've been doing and where we're going.

As a demand-led organisation, we want to hear where we can make a difference. We would love to explore future partnerships and collaborations, so read on, get inspired, and get in touch!



The Climate Connect Aotearoa team



Table of contents

About us	5
Our goals	6
How we work	7
Our impact	8
Indicator highlights	9
2022-2024 Programme highlights	10
Knowledge and tools	11
Climate Challenges	13
Hosted events	18



Ngā kōrero mō mātou

About us

Climate Connect Aotearoa (CCA), spearheaded by Tātaki Auckland Unlimited on behalf of Auckland Council, is an innovation hub dedicated to fostering collaborative climate action.

Established in October 2022, the hub delivers on the Economy priority action from Te Tāruke-ā-Tāwhiri: Auckland's Climate Plan, aiming to “accelerate the uptake of innovation that supports the delivery of a resilient, climate-proof and regenerative economy”.

The hub brings together business, government, Māori, academia, funders and investors, and climate innovators to develop, demonstrate and scale the solutions needed to ensure we reduce emissions in line with global agreements - starting in Tāmaki Makaurau Auckland.

A mātou mātapono

Our principles

Me ū ki Te Tiriti

Hold steadfast to the provisions and principles of Te Tiriti o Waitangi.

Me aro ki te whakapapa

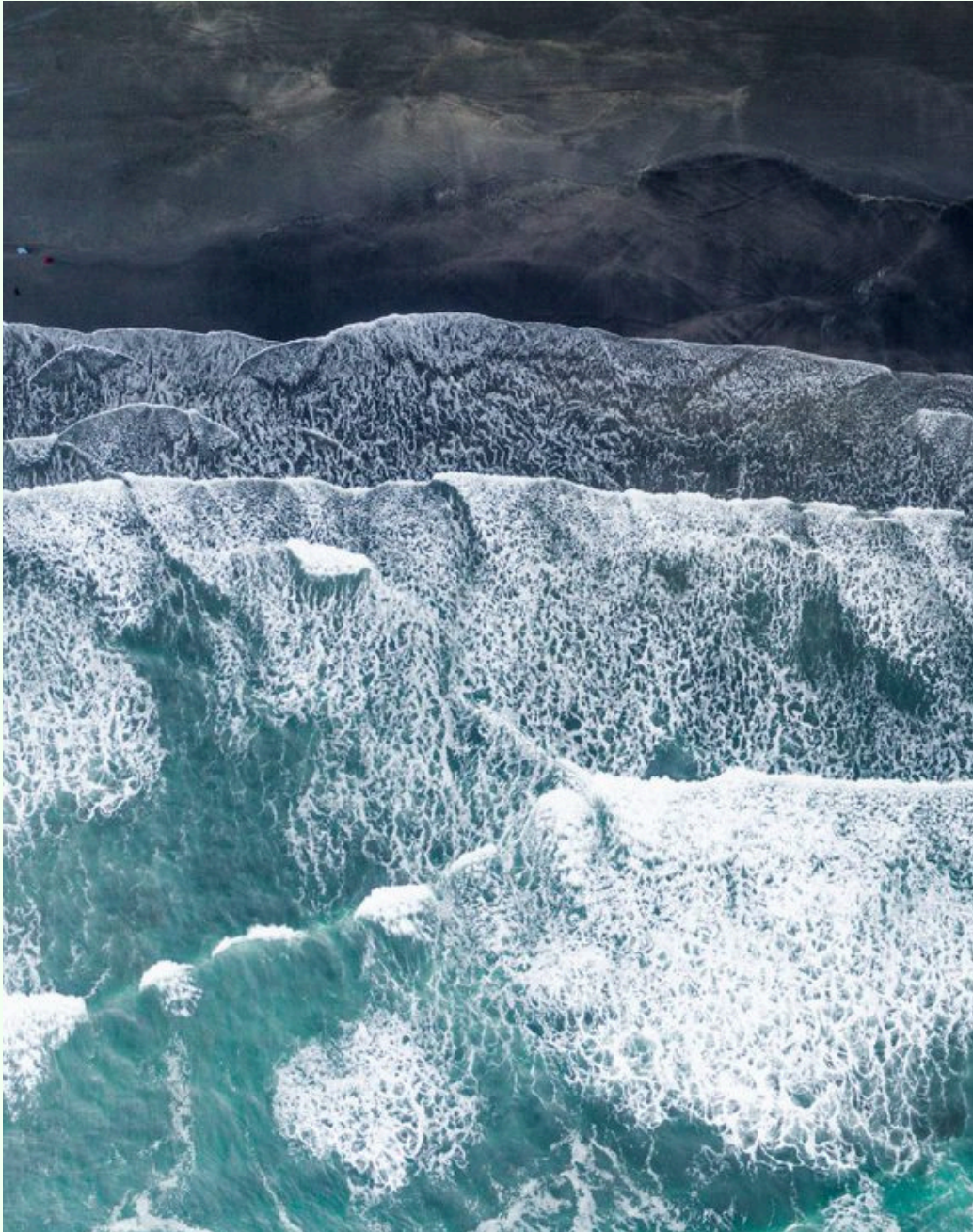
Focus on interconnectedness and the guidance from those before us.

Me tīmata kia tika

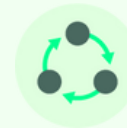
Focus on the process and what is tika for the kaupapa.

Me tiaki te mauri

Protect the life force that permeates all living things. Ka ora te mauri ka ora te tangata.



Our goals



CONNECT

Connect people and organisations in the climate innovation ecosystem, enabling and building partnerships.

This goal is applied across all work programmes for challenges and capacity building.



COLLABORATE

Collaborate on scalable solutions for demand-led climate challenges.

Climate Connect Aotearoa runs system-level innovation projects involving multiple parties across four key sectors: energy, food, transport and the built environment.



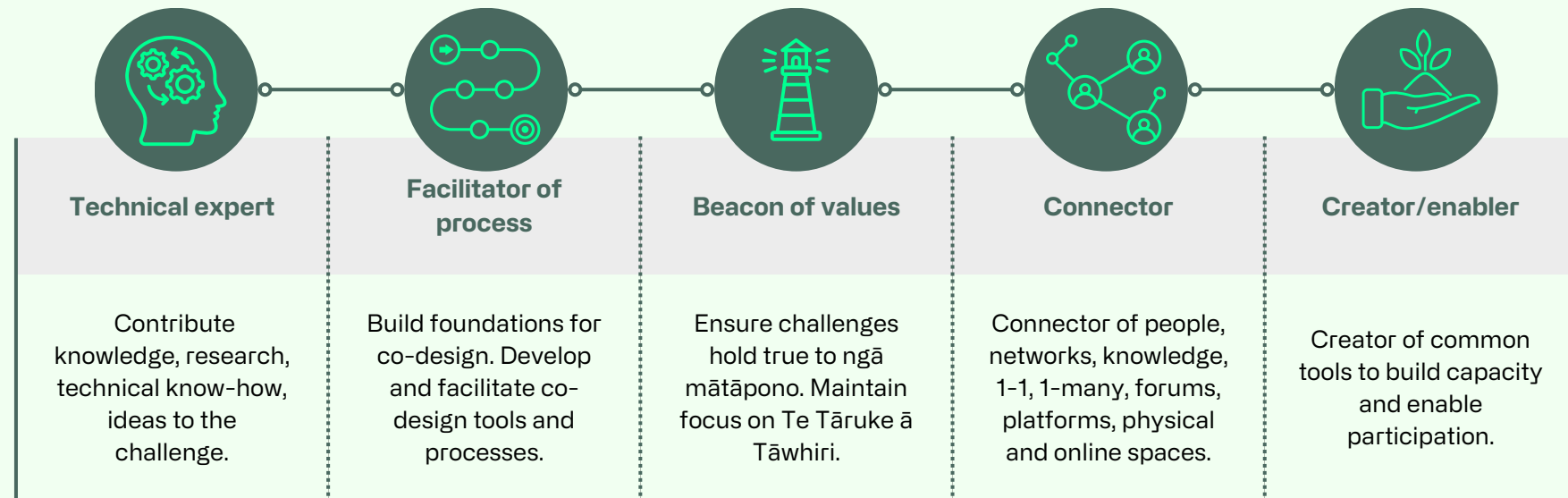
LEARN

Build system-wide knowledge and capacity for innovation and action.

This goal is supported by our knowledge hubs, ClimateLink tool, and events to share insights from targeted research.



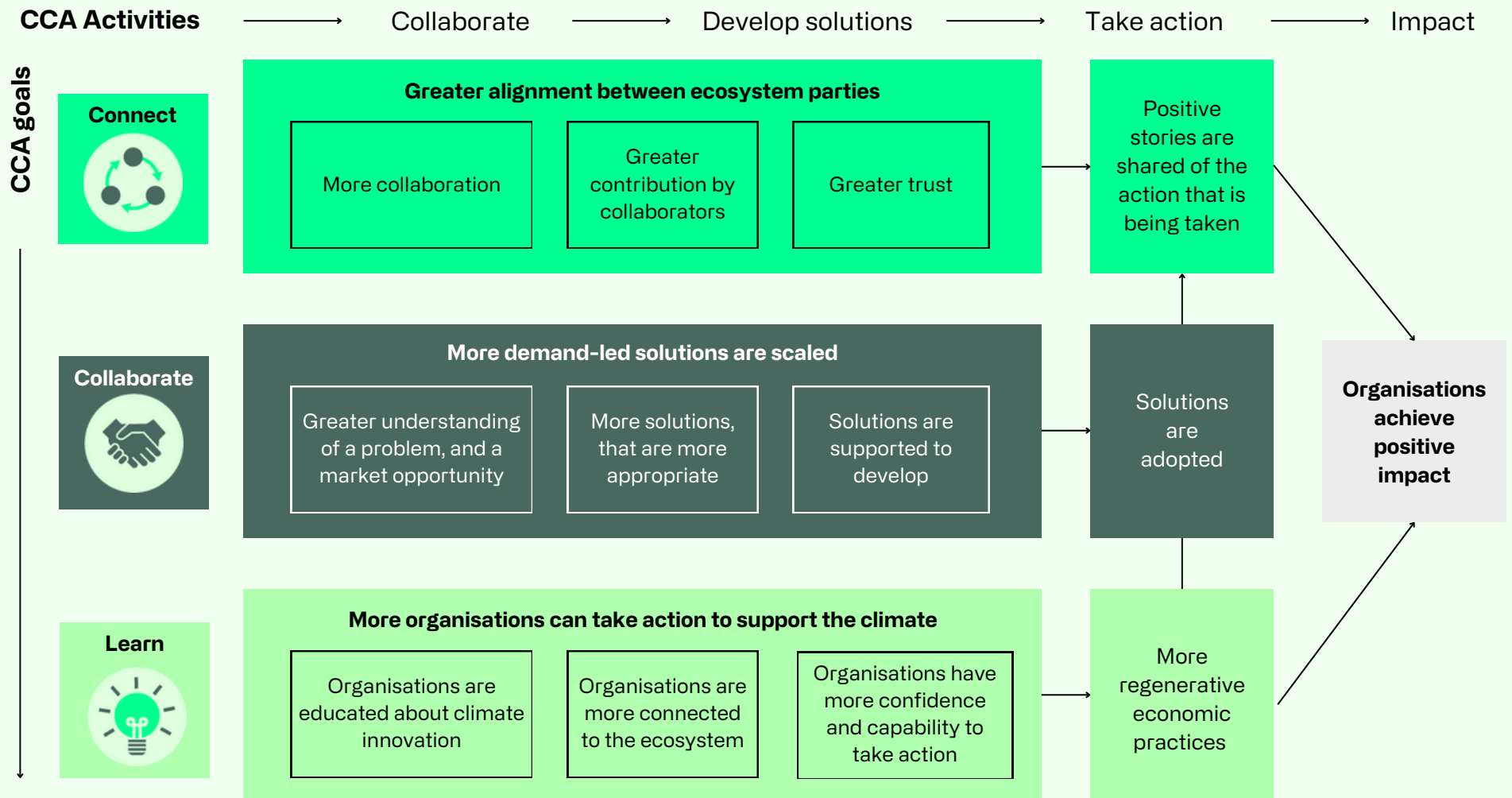
How we work





Our impact

To ensure our work is making the impact it needs to, the Ākina Foundation (Ākina) and our Advisory Group worked with us in creating an impact measurement model for our actions and programme of work.





Indicator highlights

Connect



→ Greater alignment between ecosystem parties

26

Organisations partnering on system-level climate solutions facilitated by CCA

515

Individuals at events, co-design sessions or workshops led by CCA

3900+

Followers on social media

Collaborate



→ More demand-led solutions are scaled

3

Multi-year innovative solutions developed through a co-design approach:

- Energy Sharing
- Business resilience
- Green jobs and skills

17

Workshops/surveys with end users represented, discussing the market problem/opportunity

8

Research funded by CCA giving greater understanding of a market problem/opportunity

Learn



→ More organisations can take action to support the climate

28,000+

Views of Knowledge Hub, He Kete Mātauranga, and News articles

4900+

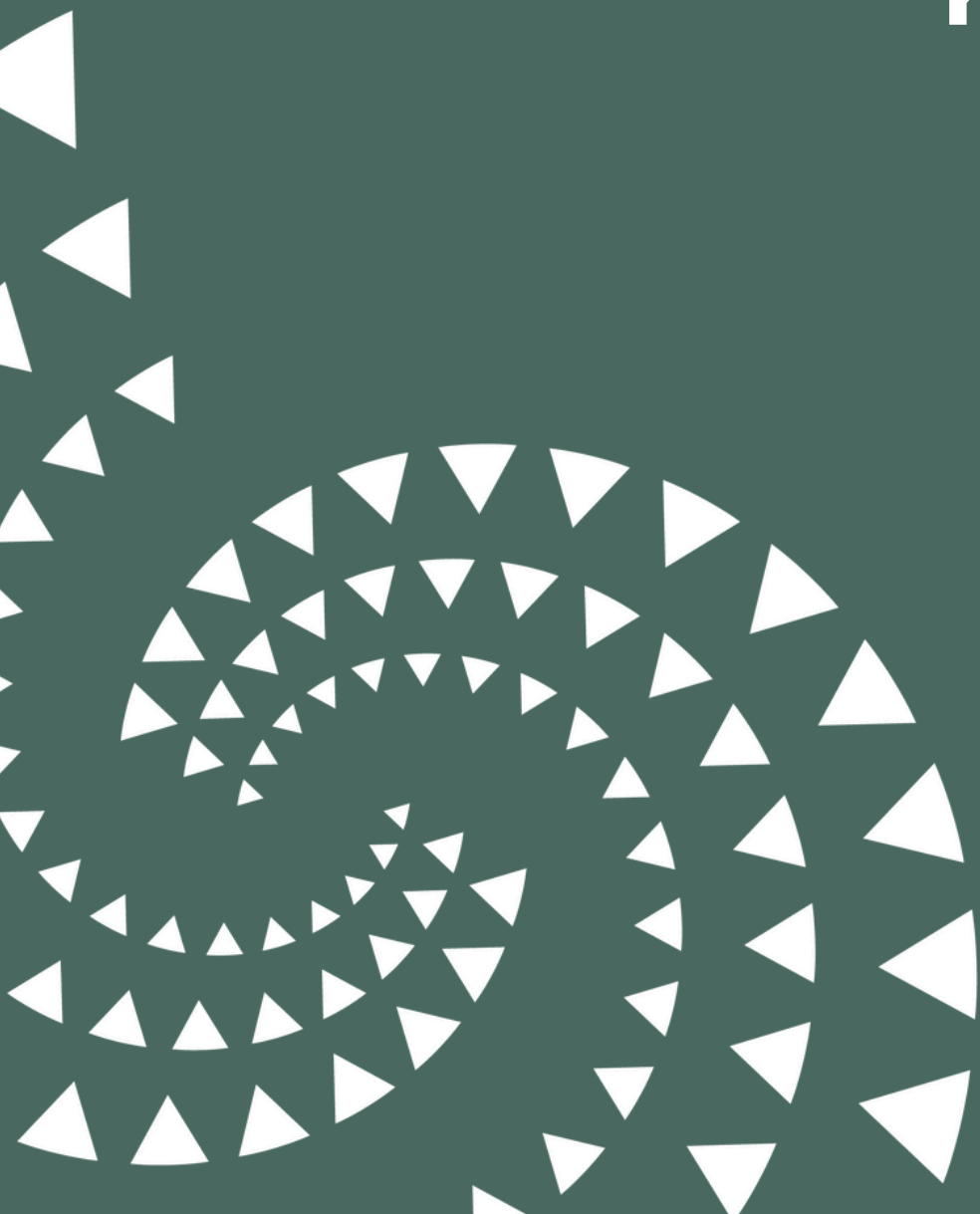
Users of ClimateLink

25

Events/workshops hosted or sponsored by CCA

2022-2024 Programme highlights

Knowledge and tools

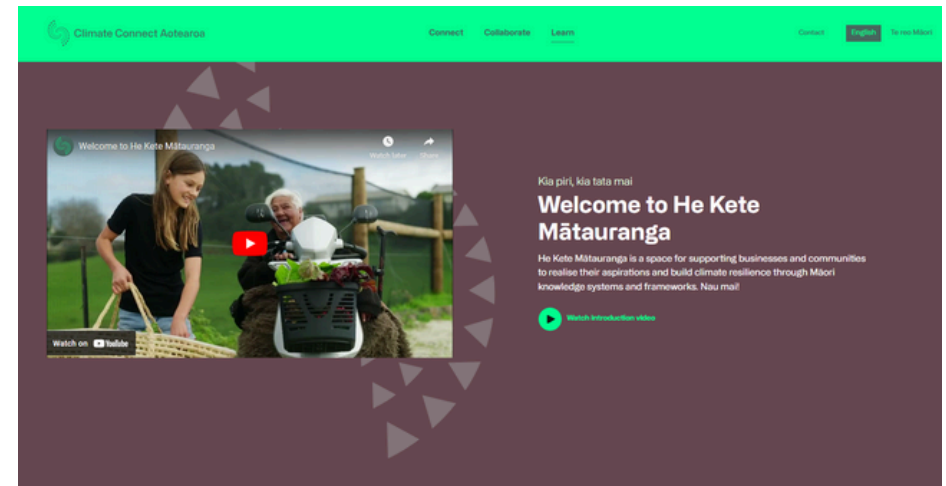


He Kete Mātauranga



Launched in July 2023, He Kete Mātauranga is a space within the Climate Connect Aotearoa website to support businesses and communities in building climate resilience through Māori knowledge systems and frameworks. It connects businesses, communities and organisations with Māori-led climate resources to build capability, share insights and support climate action in Tāmaki Makaurau, as well as across Aotearoa.

Climate Connect Aotearoa engages with Māori leaders and climate innovators, delving into the vital role of mātauranga Māori in addressing climate challenges, and sharing these discussions through online videos and articles. Explore [He Kete Mātauranga](#).



Dan Te Whenua Walker (Ngāti Ruanui, Ngāruahine, Ngāti Kahungunu ki Wairoa, Tūhourangi, Ngāti Maniapoto)
Microsoft, Senior Partner Development Manager, Engagement Lead - Connected Communities



Te Huia Taylor (Ngaati Te Ata Waiohū)
Paakaurua Consultants Limited, Director, Taiao and mātauranga Māori consultant



Dan Hikuroa Ngāti Maniapoto, Waikato-Tainui, Ngaati Whanaunga)
University of Auckland, Earth Systems Scientist and Associate Professor in Māori studies



Te Aopare Dewes, (Ngāti Porou, Ngāti Rangitīhi, Ngāti Whakaue)
Chapman Tripp, Partner and lead for Māori legal group Te Waka Ture



Knowledge and tools

2022-2024 Programme highlights

ClimateLink



In September 2023, Climate Connect Aotearoa launched ClimateLink, a tool designed to help businesses and organisations find connections, identify funding opportunities, and discover resources for climate action.

Insights in numbers

12,300+

Views

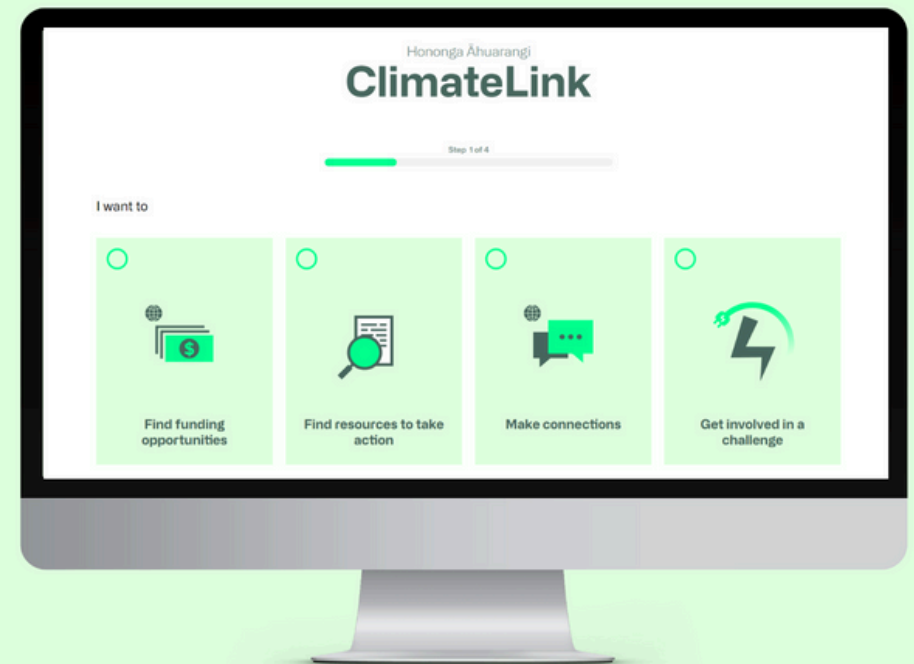
4900+

Users

6027

Sessions

Kickstart climate action!



Find resources, connections & funding opportunities.

View ClimateLink [here](#).



Knowledge and tools

Knowledge & connections

In 2022 Climate Connect Aotearoa launched the Ecosystem map, Knowledge Map and the Knowledge Hub.

Ecosystem Map



Climate Connect Aotearoa established an interactive and visual mapping tool designed to share who's who in the fast-growing climate innovation community to accelerate collaboration across the climate innovation ecosystem. View the [Ecosystem Map](#).

Knowledge Map

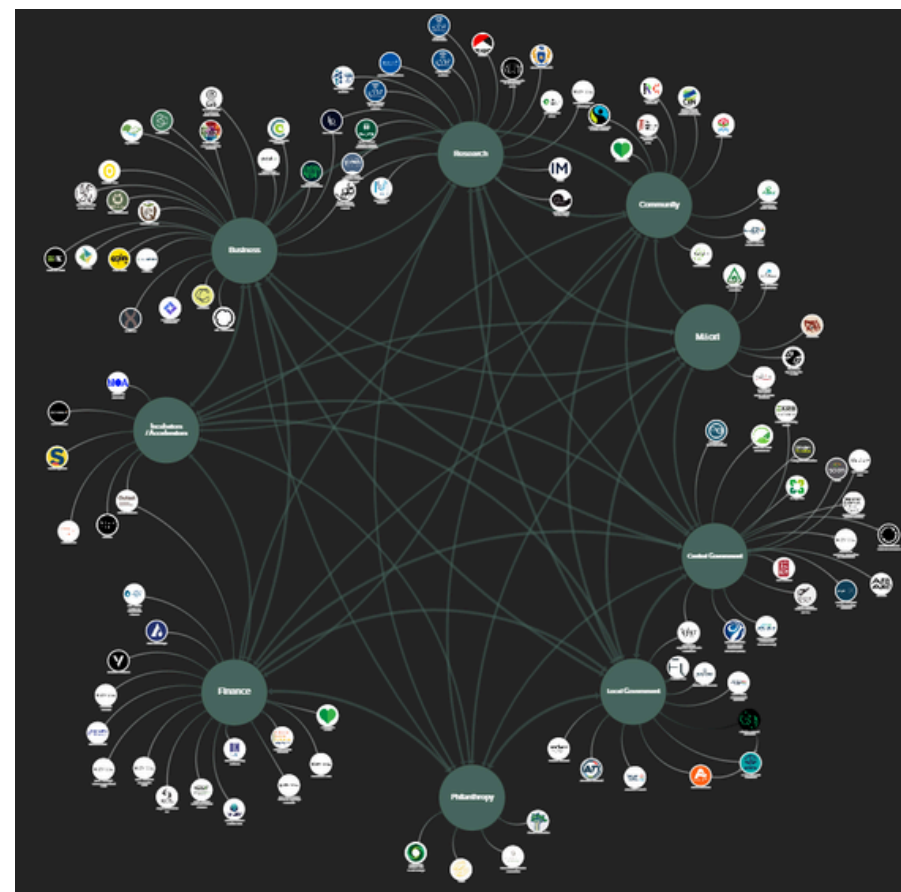


The Knowledge Map is an interactive and visual map that collates existing climate resources to make them easier for users to navigate. It includes tools, templates, guidelines, training, reports and much more. Explore the [Knowledge Map](#).

Knowledge Hub

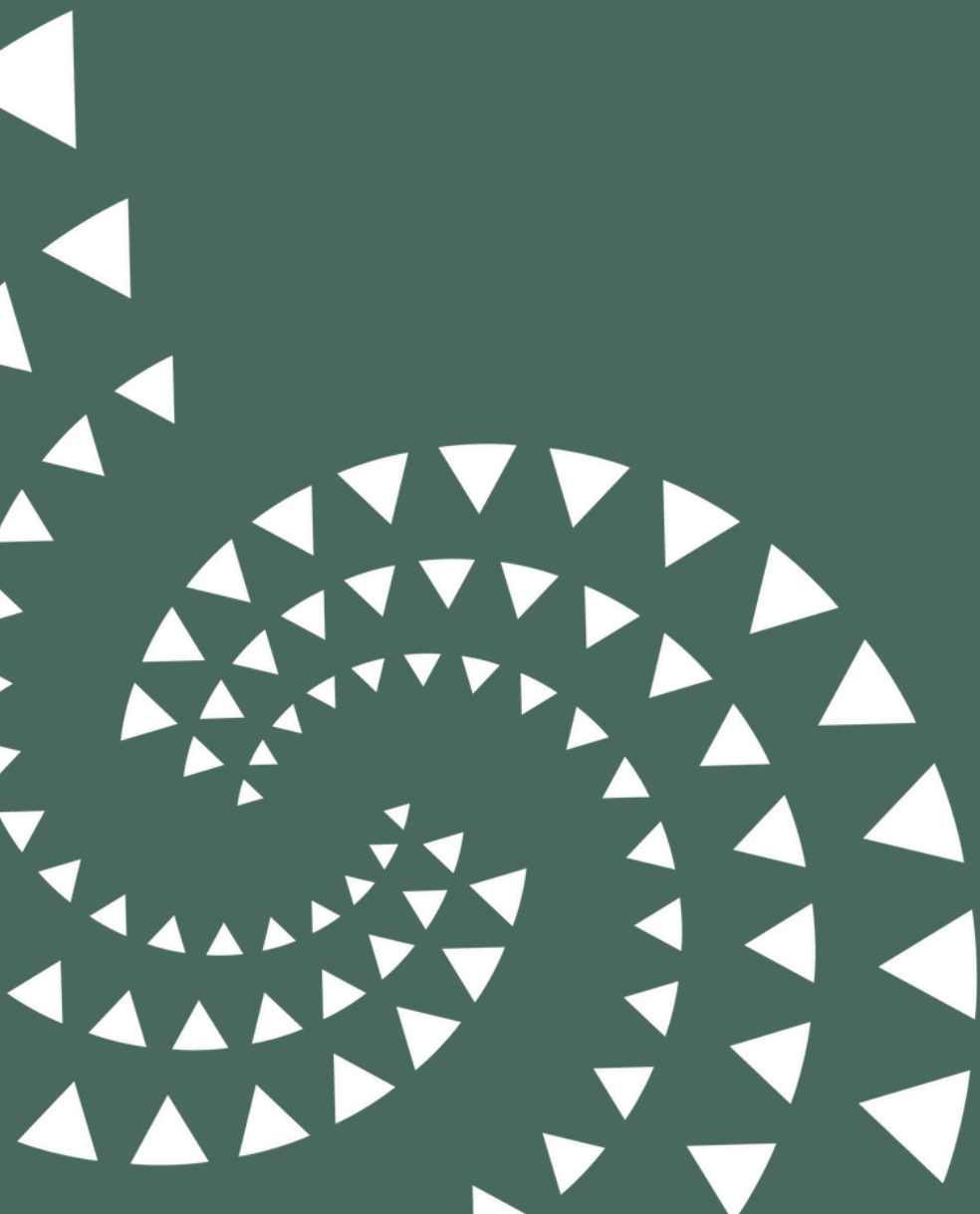


The Knowledge Hub, on the Climate Connect Aotearoa website, publishes research, resources, and articles that communicate technical climate change knowledge and research in a way that is accessible for businesses and organisations to be able to apply it. View the [Knowledge Hub](#).



2022-2024 Programme highlights

Climate Challenges





Challenge framework

Climate Connect Aotearoa runs system-level innovation projects involving multiple parties across four key sectors: Energy, Food, Transport and The Built Environment.

We worked with our Advisory Group to develop a guidance framework for CCA investment in a challenge.

Opportunities must...	Prioritise opportunities that...
<ul style="list-style-type: none">• Uphold ngā mātāpono - CCA principles• Align to the goals of Te Tāruke-ā-Tāwhiri: Auckland's Climate Plan• Be driven by collective wellbeing• Be demand-led	<ul style="list-style-type: none">• Focus on scalability• Deliver multiple benefits• Promote social equity and inclusion• Are able to share learning more broadly and build capacity• Enable job-creation• Have a systems-level approach





2022-2024 Programme highlights

Franklin energy sharing

A new approach to sharing low-carbon energy in the community.

Climate Connect Aotearoa is collaborating with Ara Ake (the government's future energy organisation), Counties Energy, and community organisations to pilot how, in the right regulatory and business scenario, homes and businesses in the community could benefit from sharing solar-generated energy – and lead to a smarter, more resilient and affordable energy system.

Project timeline

Year one of a four-year project

Why is this initiative needed?

Currently, New Zealand households, organisations and businesses investing in solar panels and storage cannot easily share, donate or trade excess energy. Any unused generation is sent back to the grid, where retailers typically pay a flat rate, often less than a third of retail tariffs. Meanwhile, many Tāmaki Makaurau Auckland households face high electricity costs but cannot afford solar installations to benefit from savings, and regulatory barriers prevent peer-to-peer solar sharing, leading to a mismatch of supply and demand. Expanding rooftop solar uptake can enhance climate resilience, increase renewable energy, and reduce emissions in the region.

Our solution:

The Franklin energy-sharing pilot will enable community organisations to receive gifted solar energy, reducing their power bills. It will test the benefits of multiple trading relationships, allowing customers to trade excess solar to the retailer offering the best price, regardless of their primary electricity provider – currently not permitted under existing regulations. A community-scale battery will store surplus solar energy for use during demand peaks, enhancing community resilience and network management.



**Supporting Te Tāruke ā
Tāwhiri action:**
develop, deliver and support
local and regional
decentralised renewable
energy solutions.

Outputs:

- A reduction in energy costs for those community organisations who receive spilled solar electricity
- Maximised local optimisation of unused low-carbon solar energy that would otherwise be spilled back into the grid
- An in-market demonstration of Distributed Energy Resources in use
- New, scalable technological solution for multiple trading relationships
- Informing regulators through learning-by-doing, demonstrating alternative models that can work in the market, and which may lead to regulatory change

Outcomes:

- Supporting the shift to an energy system for the future, with better resilience, sustainability, and stability
- A market that empowers electricity consumers to drive energy solutions that benefit their local community's needs.
- Community awareness of the opportunities of energy sharing and a shift from a 'consumer' to 'prosumer' approach

Core partners:



2022-2024 Programme highlights

ClimateWise

Helping businesses to plan for and adapt to climate change.

Climate Connect Aotearoa is developing an online platform with targeted online resources to help small to medium-sized businesses (SMEs) plan for and adapt to climate change, improving resilience and business continuity for the Tāmaki Makaurau region. With a planned launch in early 2025, the platform will include videos, templates and other user-friendly resources.

Project timeline

Year one of an on-going project.

Why is this initiative needed?

SMEs are vulnerable to climate change impacts like extreme weather, higher temperatures and flooding. While big companies and the public sector have regulations and laws to guide them, SMEs face barriers in knowledge, capability and cost when it comes to climate action and business continuity planning. With 98.8 per cent of businesses in Auckland being SMEs, their resilience is crucial for the region's social and economic well-being.

Our solution

ClimateWise will provide free, easy-to-understand resources and support help SMEs prepare for climate-related disasters, manage risks, and explore how climate change adaptation could benefit their business in practical ways, like reducing costs, customer attraction, and supply chain stability.

Climate Connect Aotearoa is leading the development of the platform. We have engaged widely to confirm the need, and collaborated with technical consultants Tonkin + Taylor. Through co-designed workshops with a diverse range of SMEs, including Māori and Pacific businesses, we have developed the adaptation guidance and key messages.

**Supporting Te Tāruke ā
Tāwhiri action:**

accelerate business capability and pathways to resilient and regenerative business models; and preparing and educating Māori communities, businesses and landowners for change.

Outcomes

- Increased awareness of climate risks and opportunities amongst SMEs
- Increased number of SMEs with adaptation and/or business continuity plans in place
- Reduce risk across the wider economic system and supply chain customers
- Stronger collaboration and partnerships across organisations supporting businesses in adaptation planning

In collaboration with:



2022-2024 Programme highlights

Green Jobs and Skills

Defining opportunities for green jobs and skills in construction and infrastructure.

Climate Connect Aotearoa and Tātaki Auckland Unlimited have initiated a green jobs and skills pilot for the construction and infrastructure sector, focusing on the Māori and Pacific supply chain and its workforce, in Tāmaki Makaurau Auckland. Forming the basis of a Climate Connect Aotearoa 'Built Environment Challenge', this will inform and facilitate an equitable and just transition to a regional, yet scalable, green economy that helps the region meet its emissions targets and build resilience.

Project timeline

Year one of a three-year project.

Why is this initiative needed?

In 2023, Climate Connect Aotearoa and Tātaki Auckland Unlimited undertook [research](#) to understand the implications of a net zero economy on key jobs and skills for the Auckland region, identifying areas that will require support in the shift to a low carbon, resilient region. This project takes this further, looking to establish pathways to support a just transition.

Our solution

The pilot project, which took place over 2024, saw a green jobs and skills programme co-designed with key stakeholders with delivery partner MAU Studios leading the co-design process. A Project Group was established to support the programme, comprising industry partners as well as representatives from local and central government – including, Climate Connect Aotearoa, Tātaki Auckland Unlimited, [Auckland Co-design Lab](#), [Centre for Social Impact](#), [ConCOVE Tūhura](#) and Te Puni Kōkiri – Ministry of Māori Development.



Supporting Te Tāruke ā Tāwhiri action:

assess climate change risks to Auckland's economy and develop targeted programmes to support the most affected sectors.

Outcomes

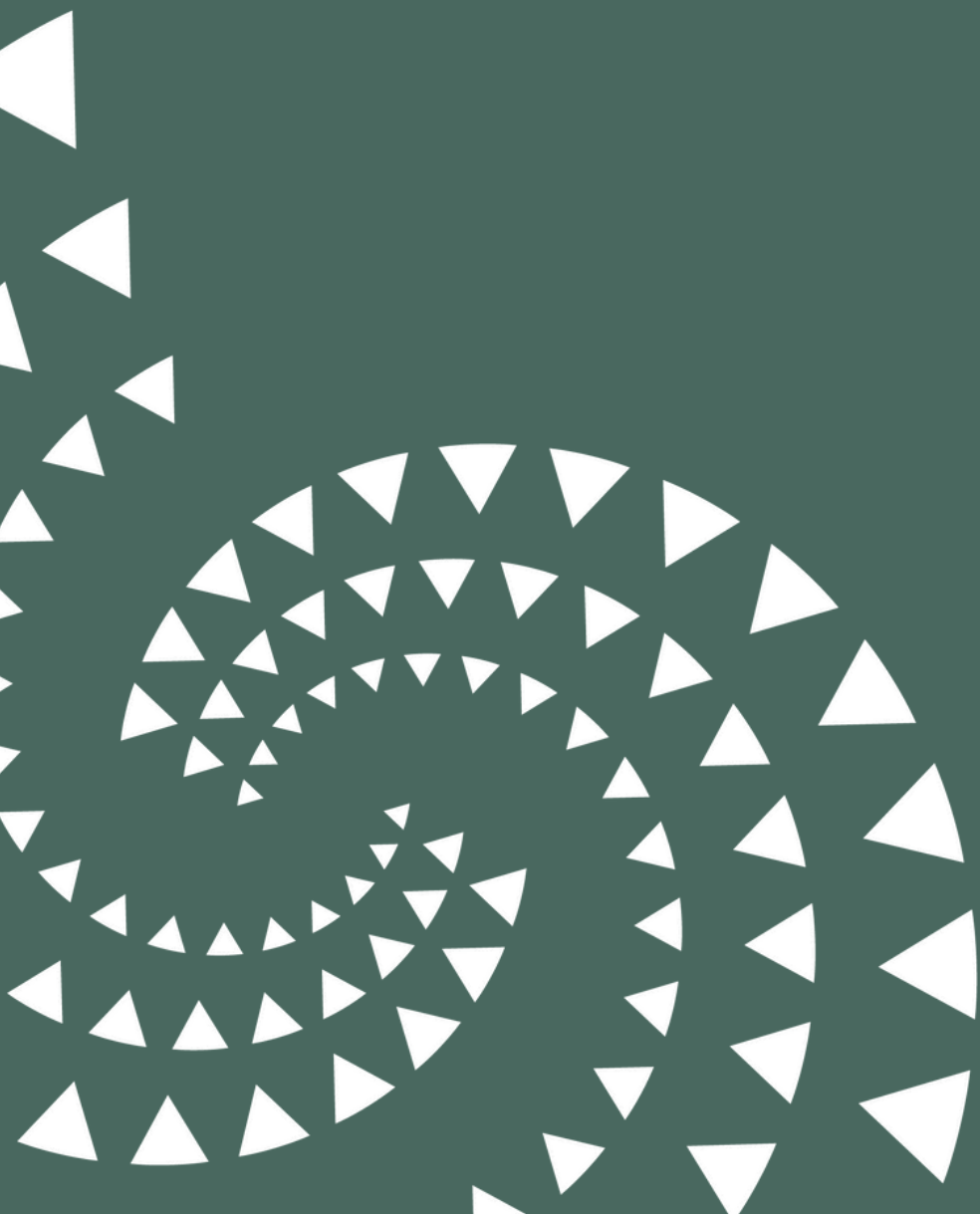
- Collaboration between local businesses and public-private entities in addressing green jobs and skills requirements for the future
- A clear, demand-led pathway to high-value green jobs and skills in the construction sector
- Improved employment opportunities for Māori and Pacific construction/infrastructure workforce
- Assist Auckland's transition to a green economy, and help New Zealand meet its net zero goals

In collaboration with:



2022-2024 Programme highlights

Hosted events





2022-2024 Programme highlights

Decarbonising SME Operations



Supporting Auckland SMEs to decarbonise operations, March 2024

- Free information sharing event for SMEs
- Participation from 26 businesses and agencies
- Industries included manufacturing, food and beverage, commercial laundering, industrial waste, carpets and textiles, and heavy industries
- Actionable insights and practical tips for businesses transitioning towards low-carbon energy usage

Topics covered:

- Strategies for improving energy efficiency within operations
- Methods to transition to low-carbon energy solutions
- Exploration of funding options
- Practical solutions and next steps for businesses ready to make the change

This event put into action key findings from our 2023/24 [research](#), which explored the barriers and opportunities for Auckland SMEs in process heat decarbonisation.



2022-2024 Programme highlights

Mātauranga Māori Hui



Mātauranga Māori and Climate Innovation Hui, June 2024

- 115 people from Māori business, iwi and hapū, mātāwaka organisations, climate innovators, environmental organisations, academia and communities
- In-depth look into Māori knowledge systems and how they are applied within the climate change space
- Panels on mātauranga Māori, climate innovation, and te anamata (future pathways)
- A safe space for Māori to collaborate, network and learn

Keynote speakers:

- Rereata Makiha - mātanga maramataka (Māori lunar calendar expert)
- Pauline Harris - Associate Professor, MacDiarmid Institute, Chairperson of Society of Māori Astronomy Research and Traditions (SMART)
- Hinerapa Rupuha - Waka hourua navigator (non-instrumental waka voyaging)



Read more about the hui [here](#).



2022-2024 Programme highlights

RETA programme launch



EECA (Energy Efficiency and Conservation Authority) Regional Energy Transition Accelerator programme launch (RETA), August 2024

The RETA programme aims to drive regional decarbonisation by identifying the unique challenges and opportunities in Tāmaki Makaurau, particularly in reducing emissions from process heat use.

- Participation from 85 energy users, suppliers and stakeholders
- Goal of developing a coordinated approach to achieving New Zealand's emissions reduction targets
- A platform to explore strategies and address barriers at a regional level, particularly around fuel supply and infrastructure



Key insights shared:

- Learning from experience: insights shared by businesses on process heat technologies, investment costs, plant adaptation, project phasing, funding access, expertise, and managing site constraints
- Calls for collaboration: there was a strong interest in more cross-sector collaboration to share information



Climate
Connect
Aotearoa

Get in touch

climateconnectnz.com

hello@climateconnectnz.com



linkedin.com/company/climateconnectnz